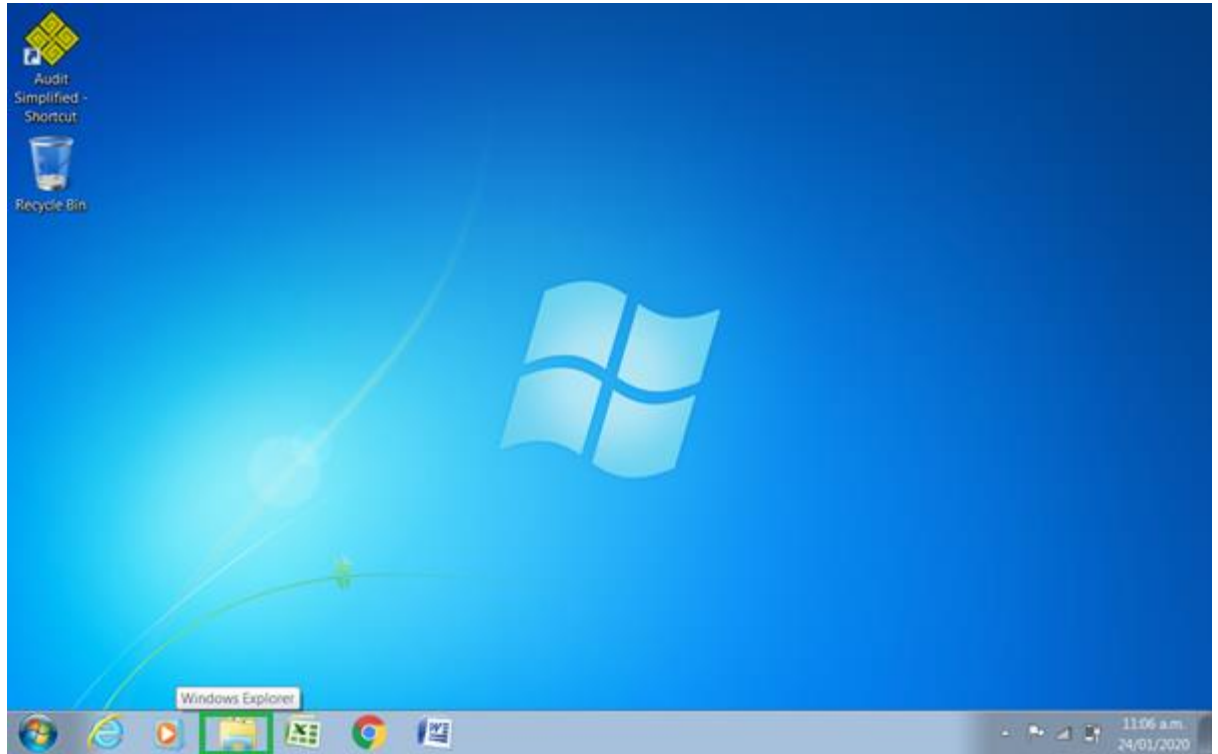
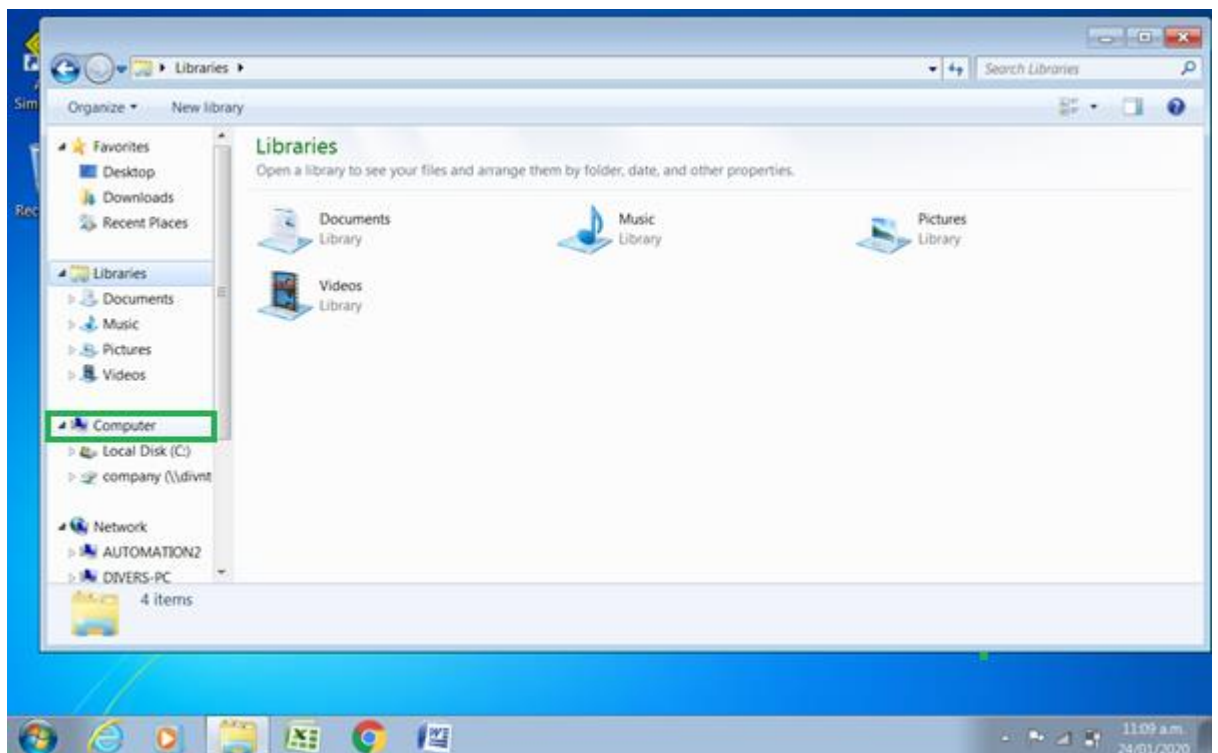


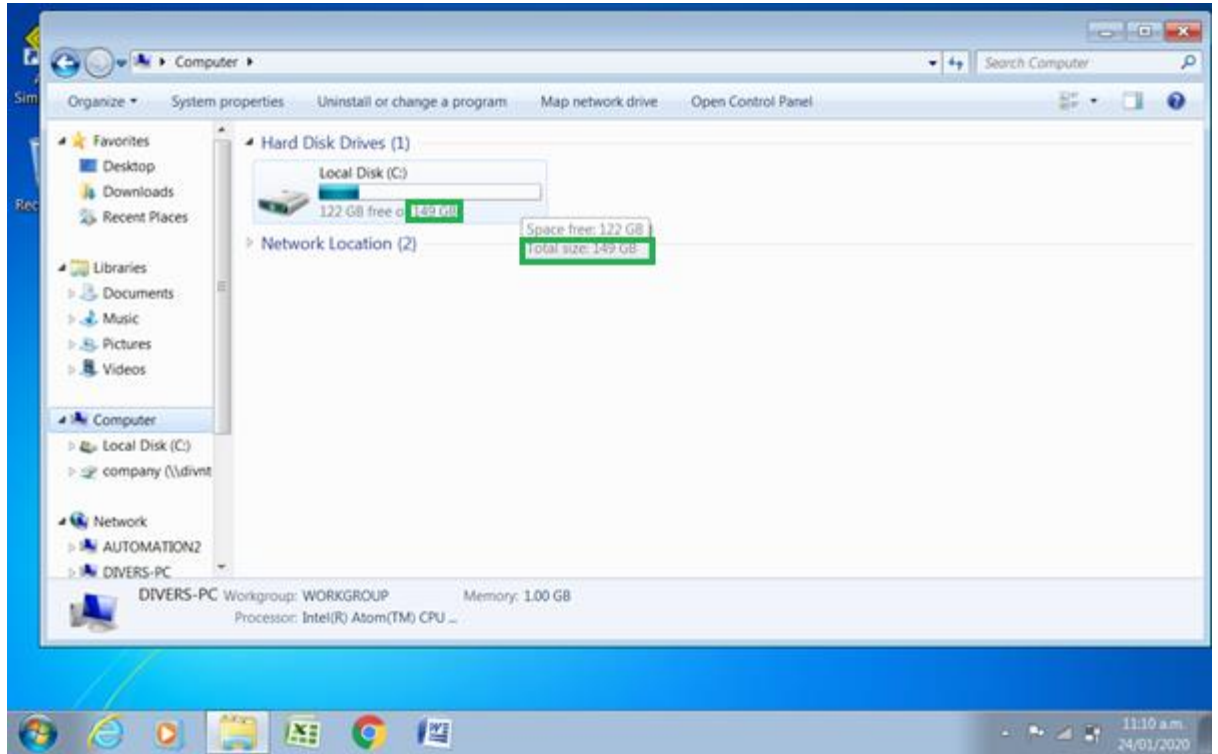
1. Open Windows Explorer (or any folder).



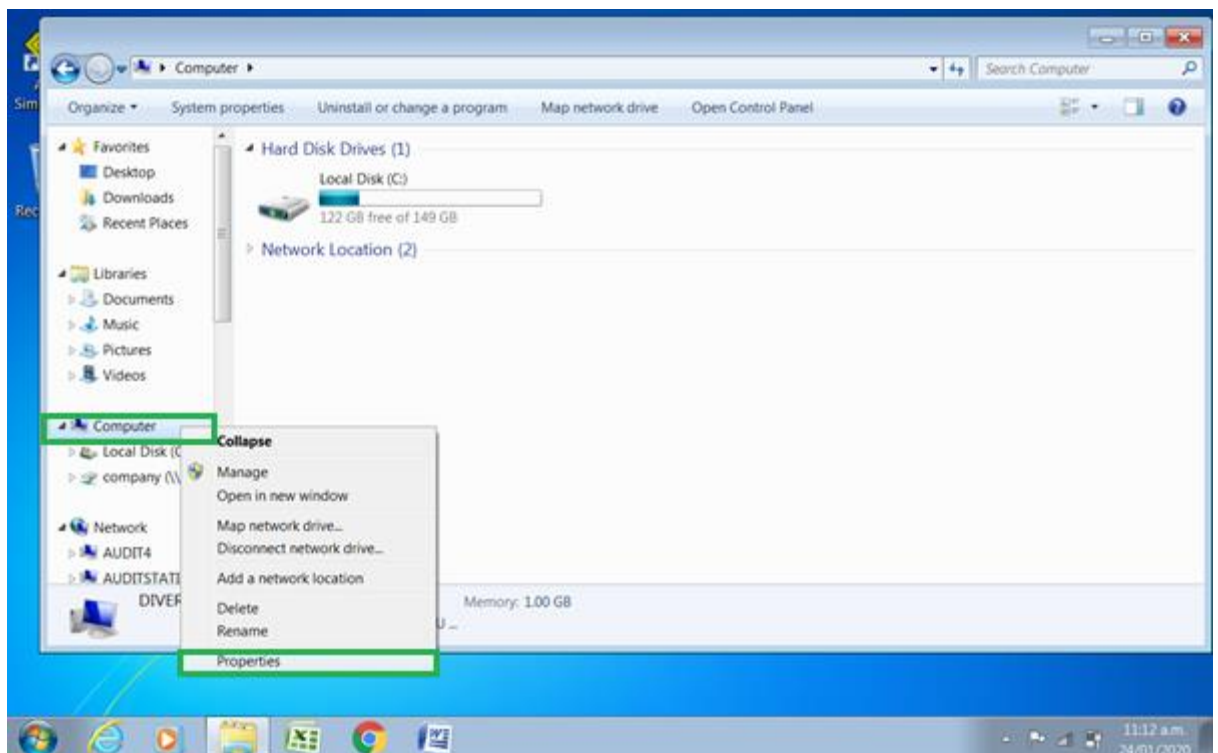
2. Select "Computer" from the menu on the left.



3. Find the total size of your hard disk drives, e.g. 149 GB. If you have multiple, add them together.



4. Then right click on "Computer" and select "Properties".



5. Here you can find:
- Operating System (e.g. Windows 7 Starter)
 - Processor (e.g. Intel Atom CPU N270)
 - RAM (e.g. 1 GB)

