



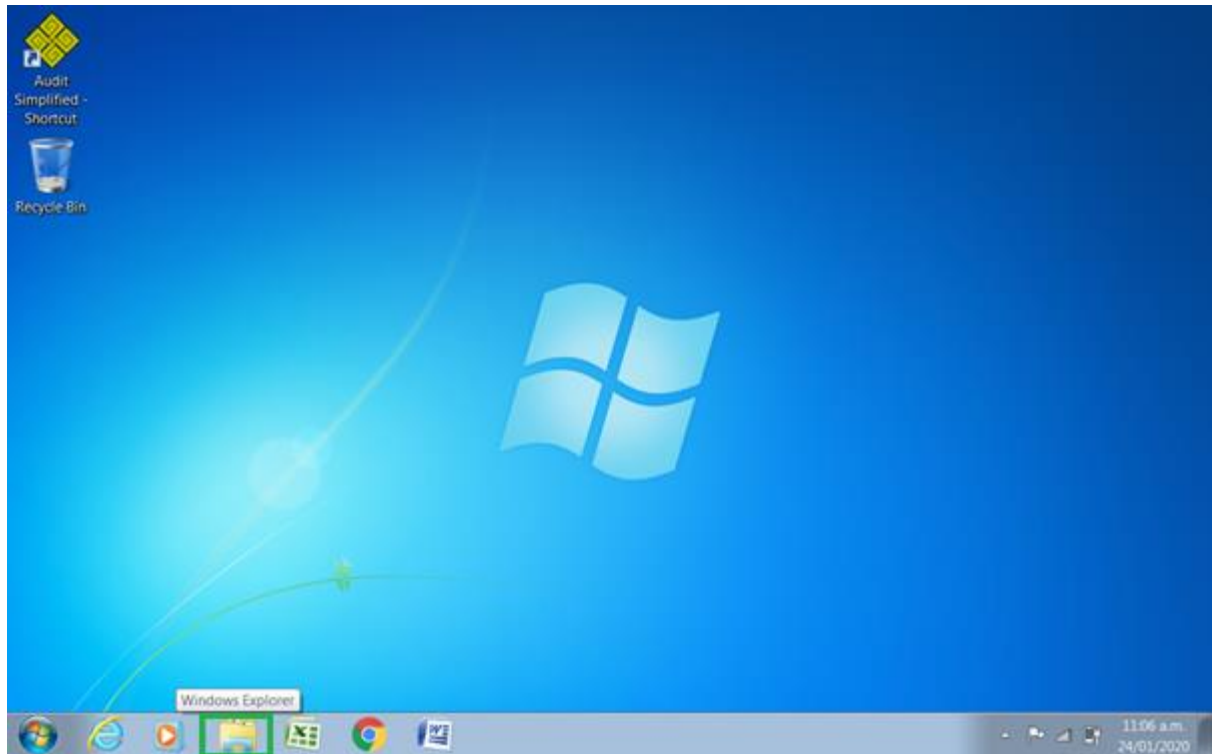
Couldn't locate your device specifications?

Check out how to find out?

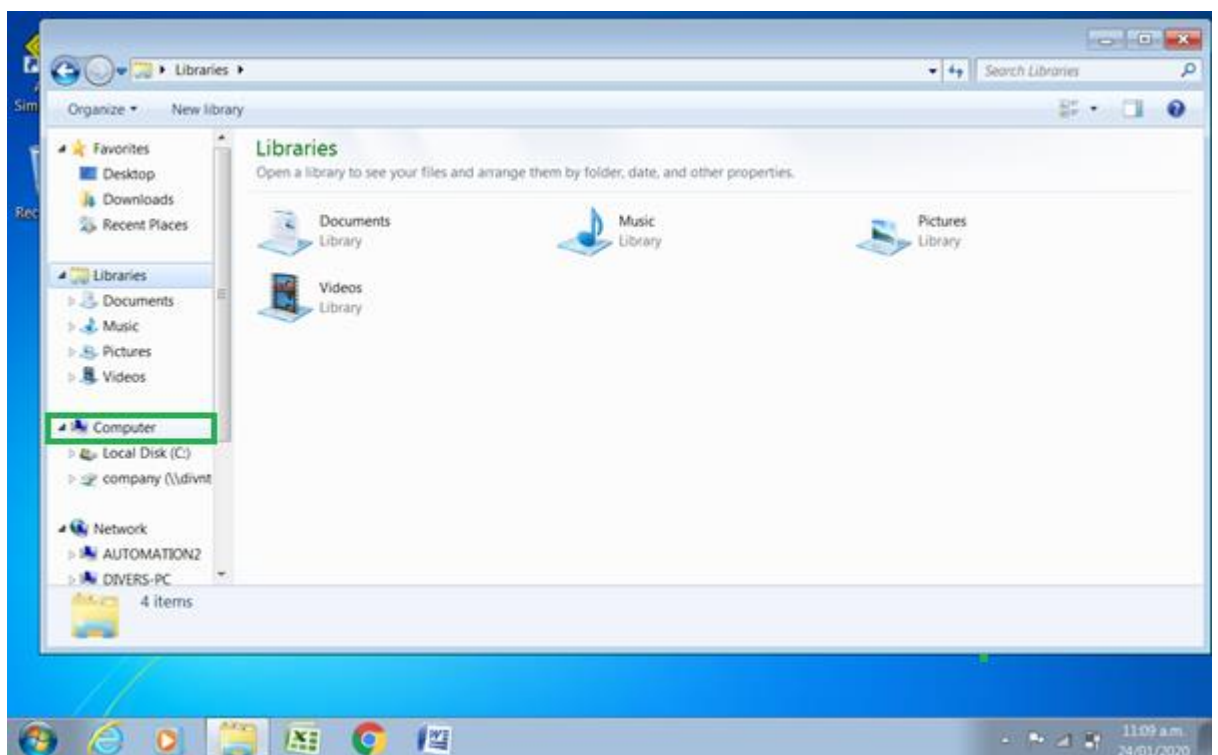
Device details lookup guide for:

- **Windows 7**
- **Windows 10**
- **MAC OS**

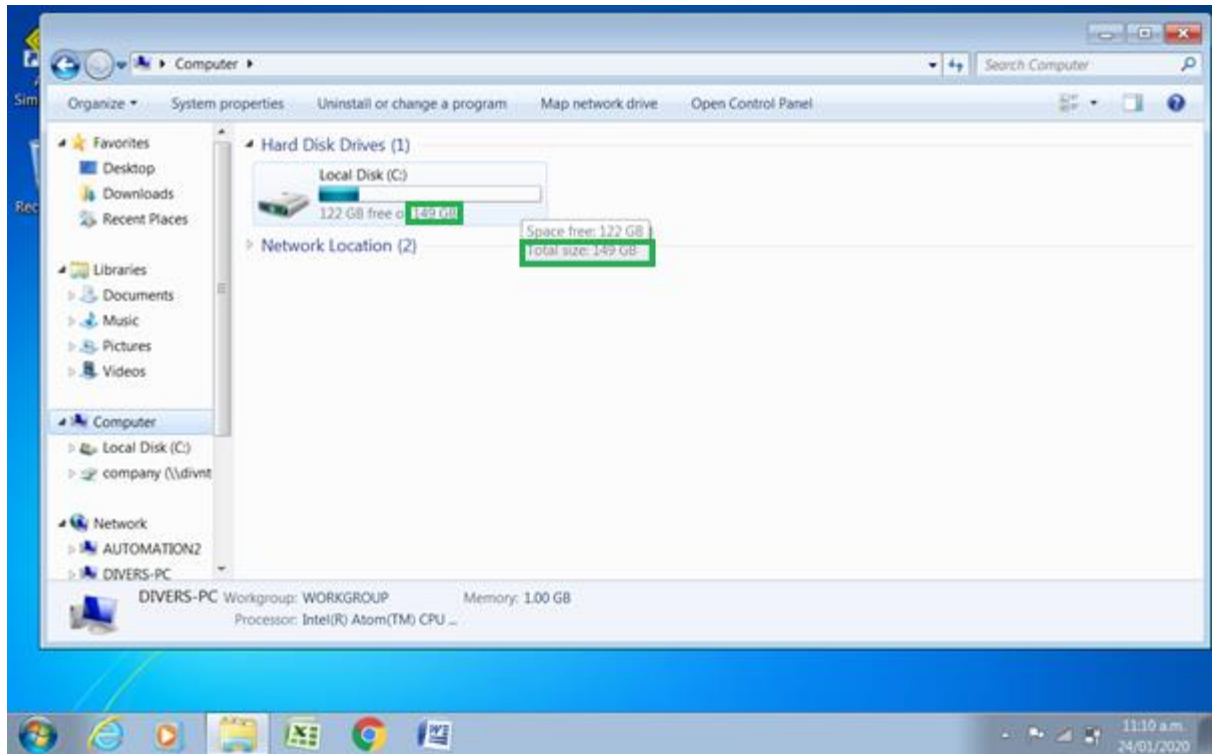
1. Open Windows Explorer (or any folder).



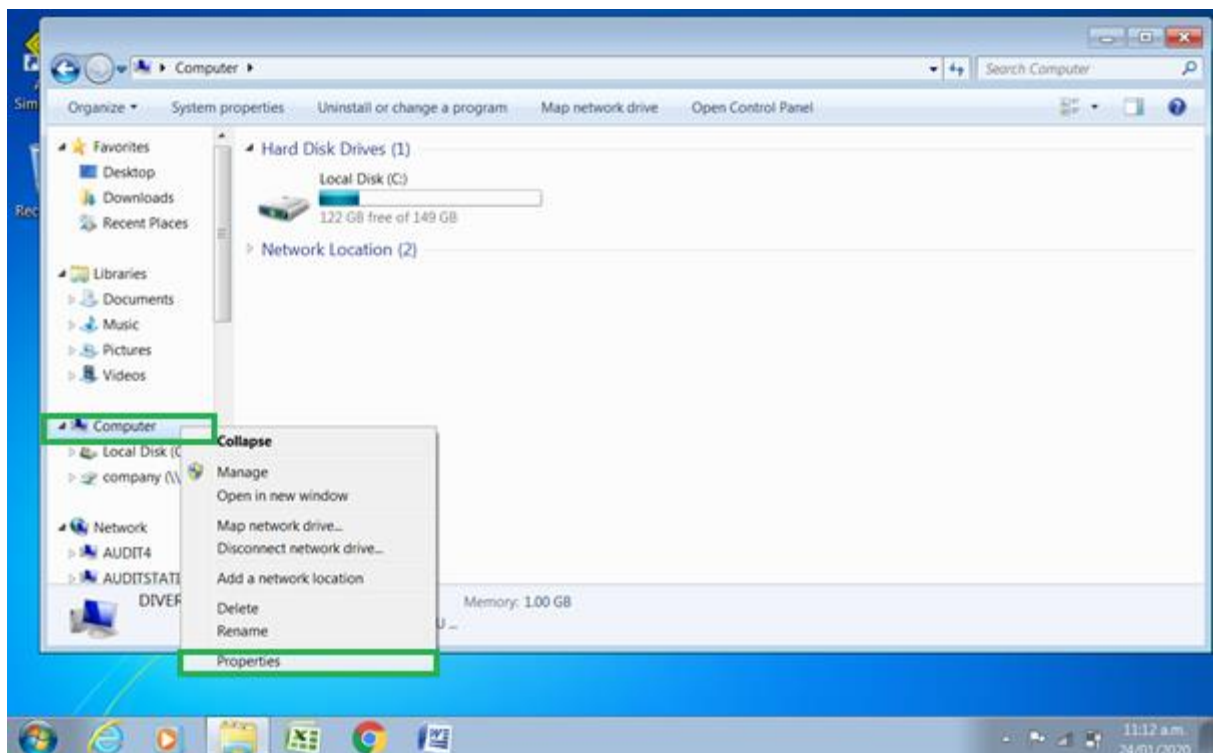
2. Select "Computer" from the menu on the left.



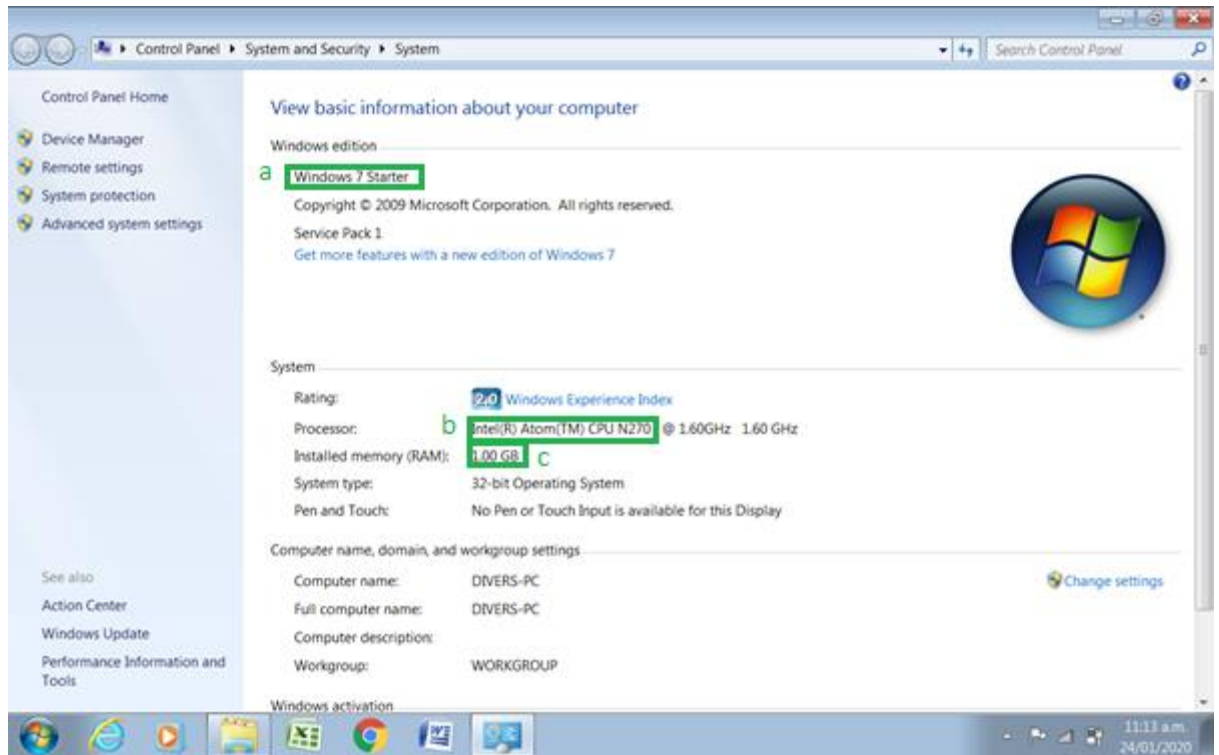
- Find the total size of your hard disk drives, e.g. 149 GB. If you have multiple, add them together.



- Then right click on "Computer" and select "Properties".



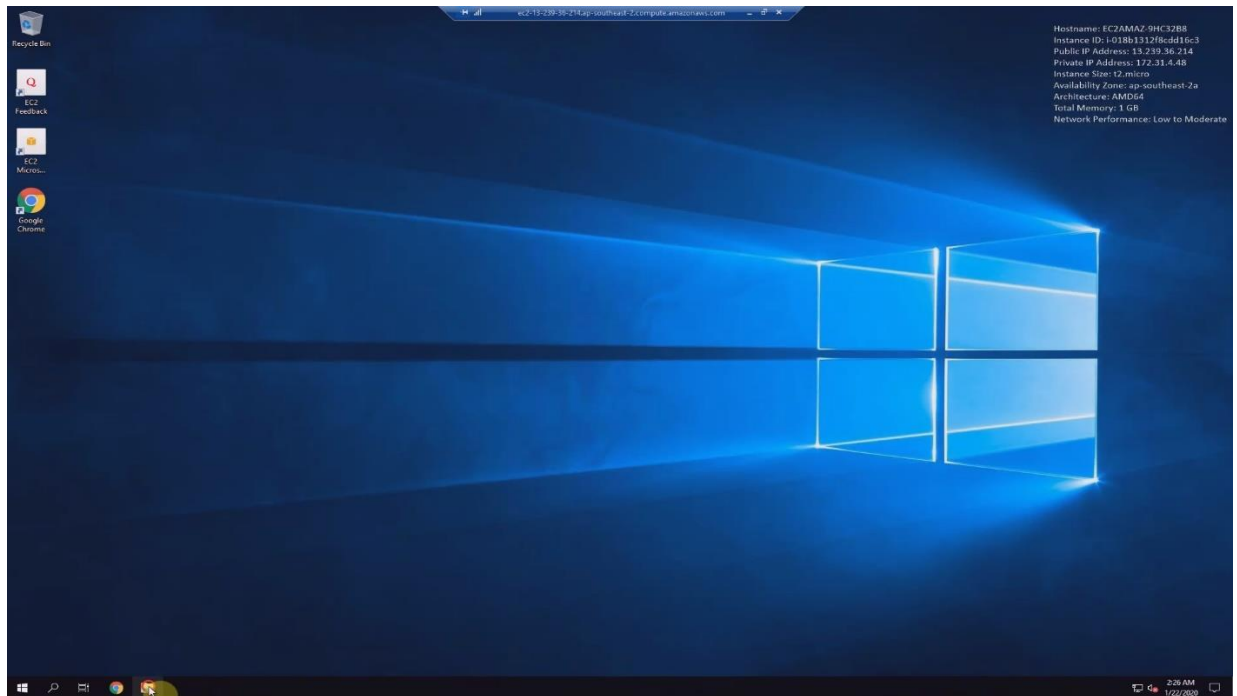
5. Here you can find:
- a. Operating System (e.g. Windows 7 Starter)
 - b. Processor (e.g. Intel Atom CPU N270)
 - c. RAM (e.g. 1 GB)



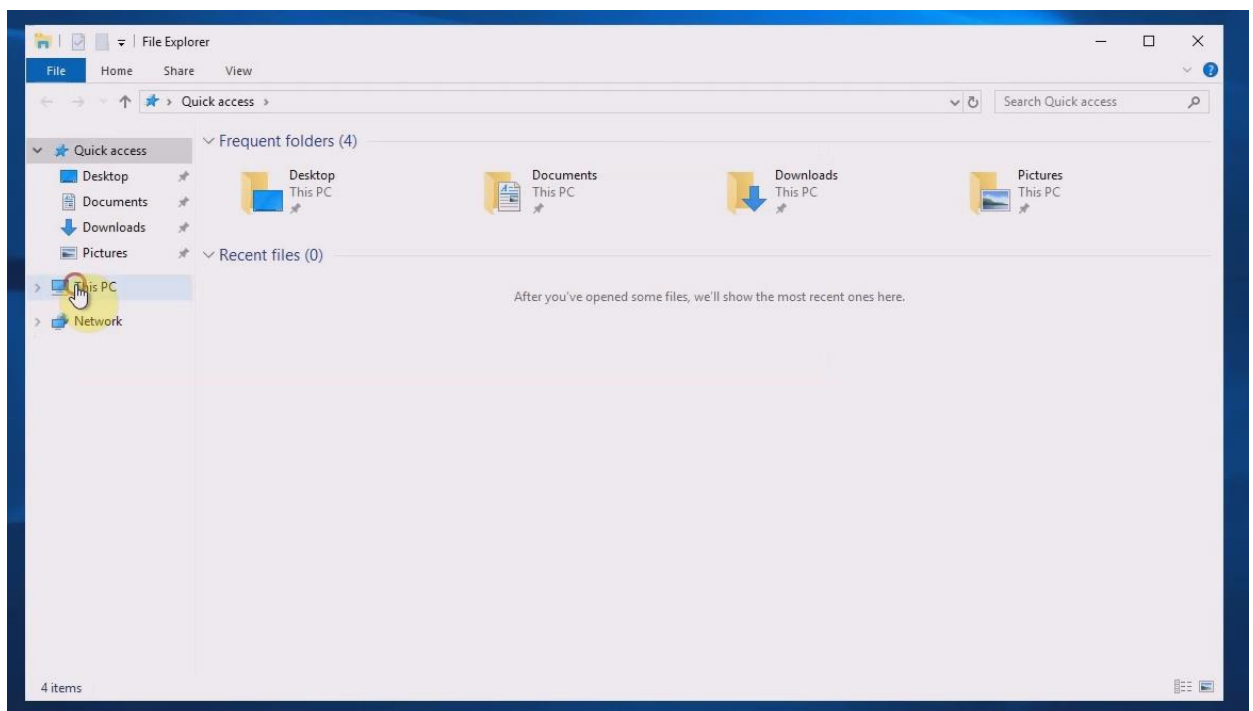


Finding Computer Specs Windows 8 & 10

1. Open File Explorer (or any folder).

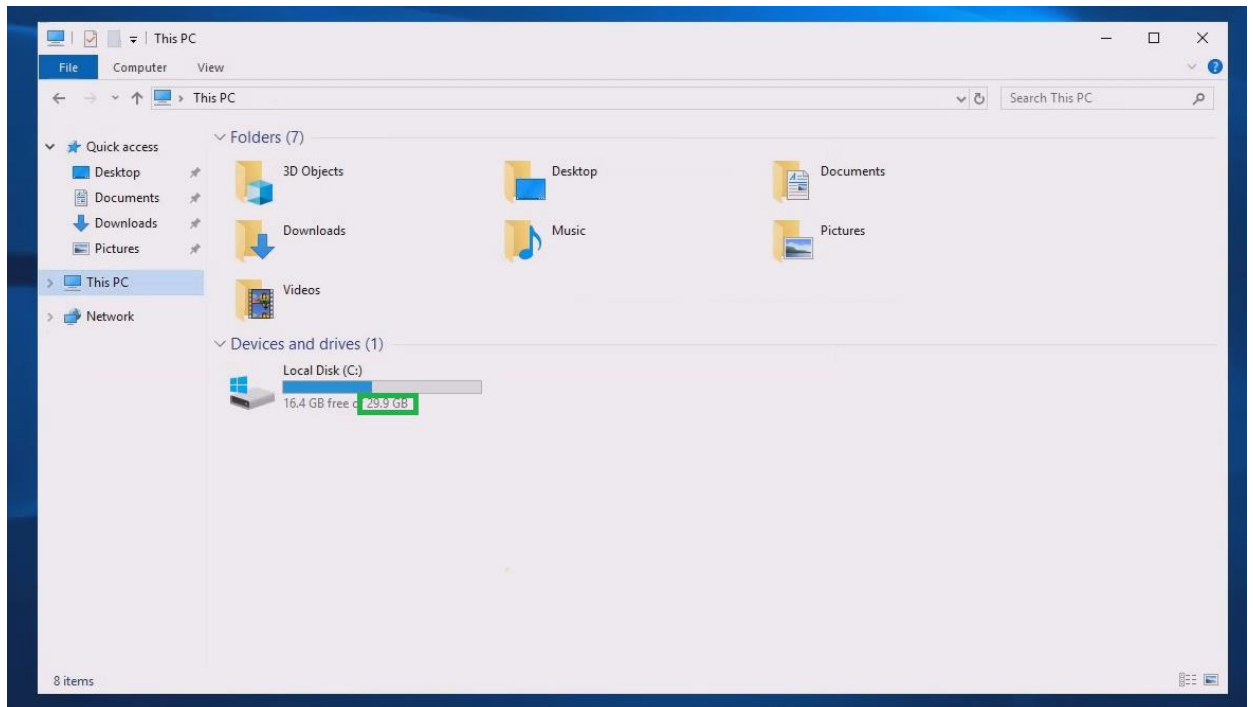


2. Select “This PC” from the menu on the left.

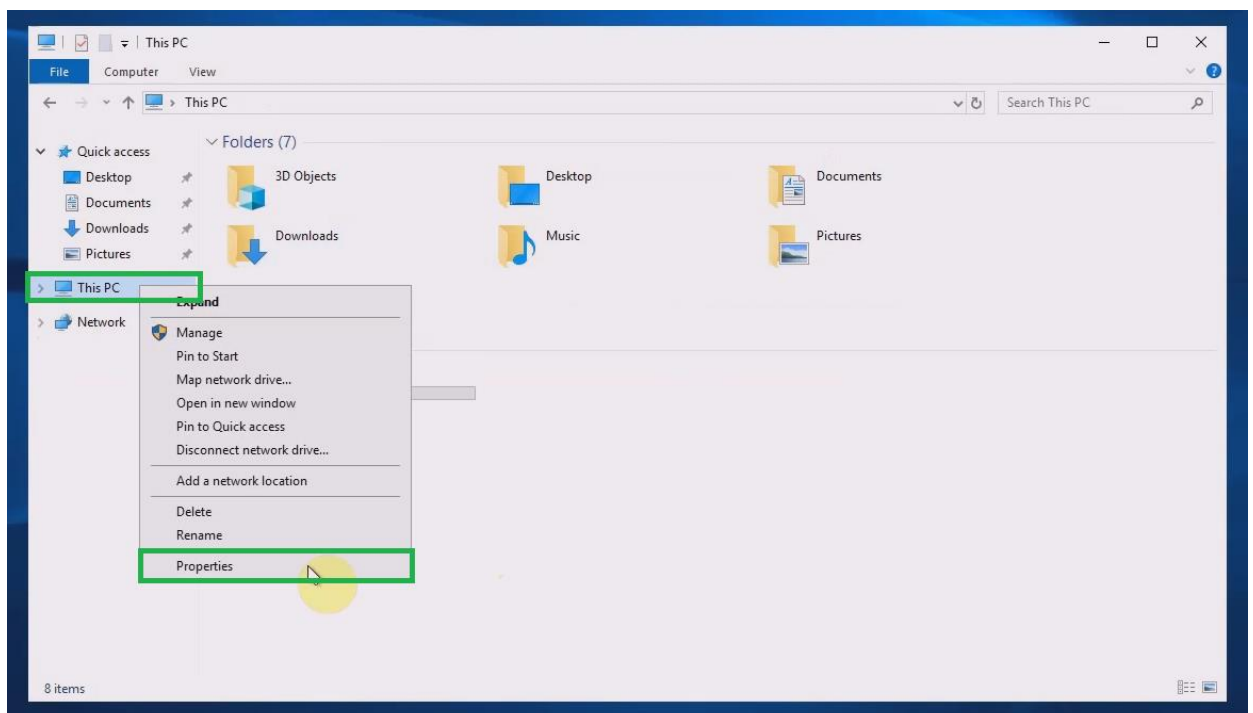


Finding Computer Specs Windows 8 & 10

3. Find the total size of your hard drives, e.g. 29.9 GB. If you have multiple, add them together.



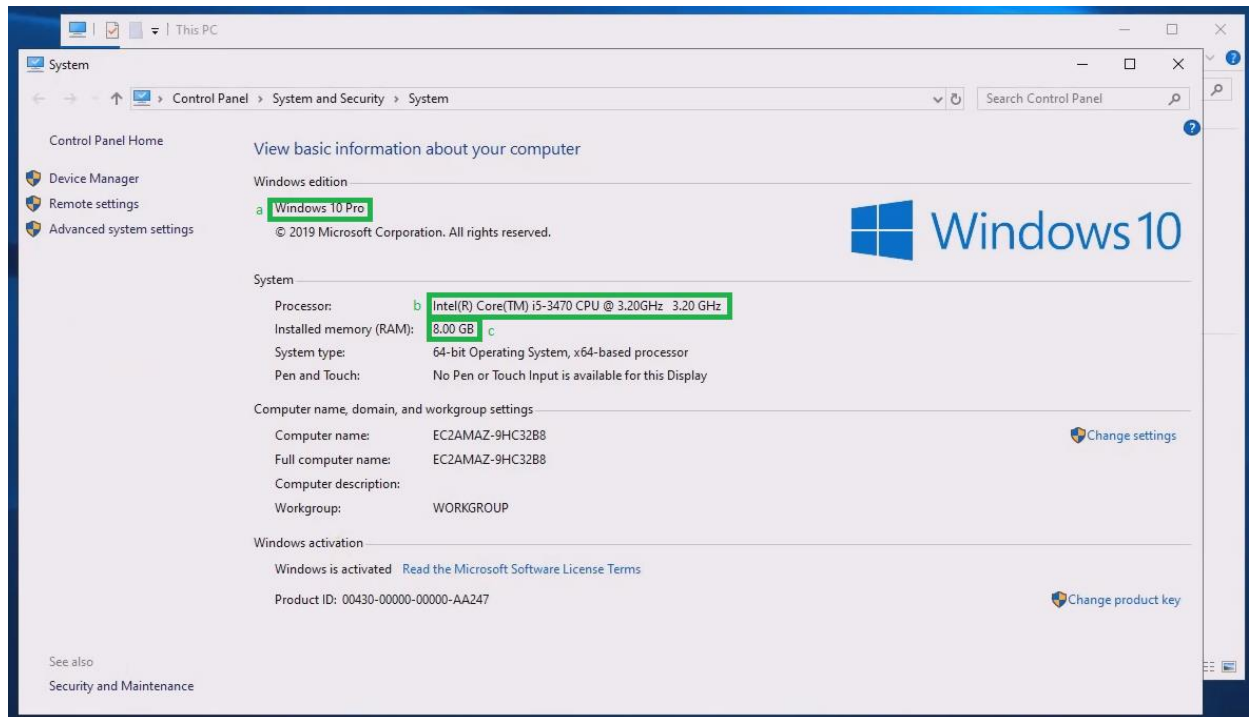
4. Then right click on “Computer” and select “Properties”.



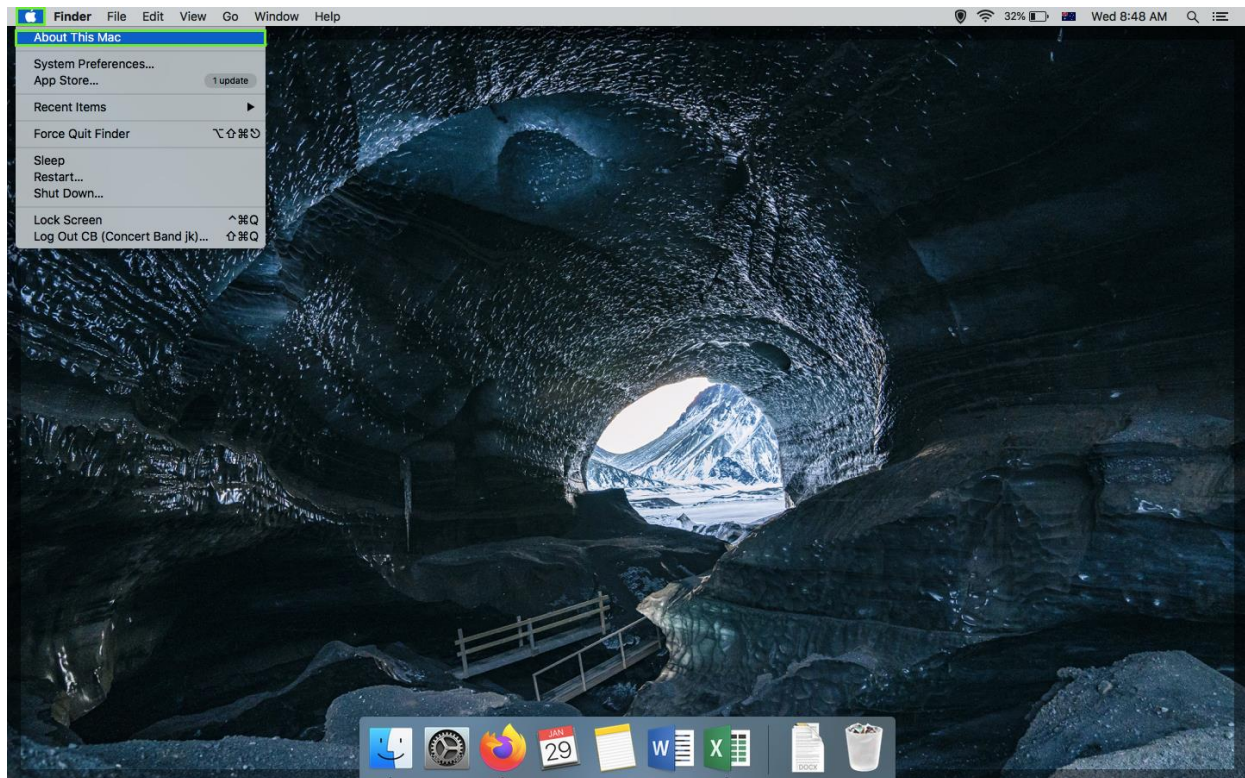


Finding Computer Specs Windows 8 & 10

5. Here you can find:
- a. Operating System (e.g. Windows 10 Pro)
 - b. Processor (e.g. i5-3470)
 - c. RAM (e.g. 8 GB)



1. Click the Apple icon in the top left corner of your screen and select "About This Mac".



2. Here you can find:
 - a. Operating System (i.e. MacOS)
 - b. Model (e.g. MacBook Air (13-inch, Mid 2013))
 - c. Processor (e.g. 1.3 GHz Intel Core i5)
 - d. RAM (e.g. 4 GB)



e.

3. Then click on the “Storage” tab.



4. Find your total storage. If the two numbers appear different, either will do (e.g. 121 GB or 121.12 GB).





Couldn't locate your
device specifications?

Have any queries?

Reach us at

customerservice@techtraders.co.nz

THANK YOU!